

**Installation Information
for
ST-20B or ST-25B Series interfaced to
Kenwood TK-780/880**

General Information:

ST-20B: This application applies to the Selectone ST-20B simple frequency domain inversion scrambler operating with Kenwood TK-780/880. The cipher process inverts speech frequencies in reference to one of eight possible inversion carriers. The scrambled speech is unintelligible to the casual listener, but the recovered audio is very clear. Operation is virtually transparent to the user. The Clear/Cipher input, used to enable or disable the cipher mode, is the only user control. Applications include commercial shared repeaters and other business and marine radio systems where protection is desired from co-channel users and casual eavesdroppers. The ST-20B does not require a license for export.

ST-25B: This application applies to the Selectone ST-25B Rolling Code Voice Encryption unit operating with the Kenwood TK-780/880. The ST-25B Rolling Code Encryption Module is a miniature, high security voice encryption device with up to four user programmable code keys, each selected from over four billion possible keys. The ST-25B may be used to communicate in a secure mode with up to four different groups on the same radio channel. To insure security, code keys are stored in a non-volatile EEPROM and are never transmitted over the air.

The Clear/Cipher select line is the only user control. Receive mode is automatic, clear speech or encrypted speech with the proper code key will be received regardless of the mode selected. Programming is accomplished via the ST-954B programmer which plugs into a computer serial port. All software is available free at www.selectone.com.

SmarTrunk Systems, Inc.

23278 Bernhardt Street • Hayward, CA 94545-1621

Phone (510) 887-1950 • Fax: (510) 887-4011 • E-mail: technicalsupport@smartrunk.com

Technical Information:

General:

The installation will require solder point connections of 12 flying leads to designated junction points in the Kenwood TK-780/880 mobile radio. The radio will require modification of the RX and TX audio path.

ST-25B only, optional (white/orange) wire if transmit alert tone is required. The transmit alert tone is required when a long transmit delay is need to gain access to a system such as (LTR). This will alert the user with a beep that the delay time has expired and is ready for the user to go ahead and talk.

Operation:

This application uses the programmable OPT key to enable clear/cipher mode by a single push. On the display will appear the (OPT) indicator as well as an audible single beep in the speaker, this is an indication that you are now in the ciphered mode. Press it again the displayed (OPT) indication will disappear and you will hear two audible beeps, you are now in the clear mode. Press and hold the (OPT) key to enter the code setting mode. Codes 1 to 16 will be displayed. Set a code by pushing the [Up/Down] buttons. When the OPT key is pressed again, the code setting mode terminates.

Installation Requirements:

- Experienced technician with radio and encryption experience.
- Radio service manual.
- Radio Service Monitor.
- Soldering Iron and required hand tools.
- ST-954B programmer and ST-25BPM software. **(ST-25B ONLY)**
- Kenwood TK-780/880 programming software (KPG49D version 1.00 or latter) and adapter (KPG-46).
- PC compatible computer.

ST-25B Configuration:

See below (ST-25B Programming Parameters)

Installation Information:

Refer to the Wiring Connection Chart & NOTES and Radio Programming.

Modification Instruction for TK-780/880:

Remove R529 and R571on the control unit.

Modification Instructions for ST-20B and ST-25B series:(See ST-20B/25B manual for resister locations)

Install a 33K ohm resister into R4 and R21 customer select locations.

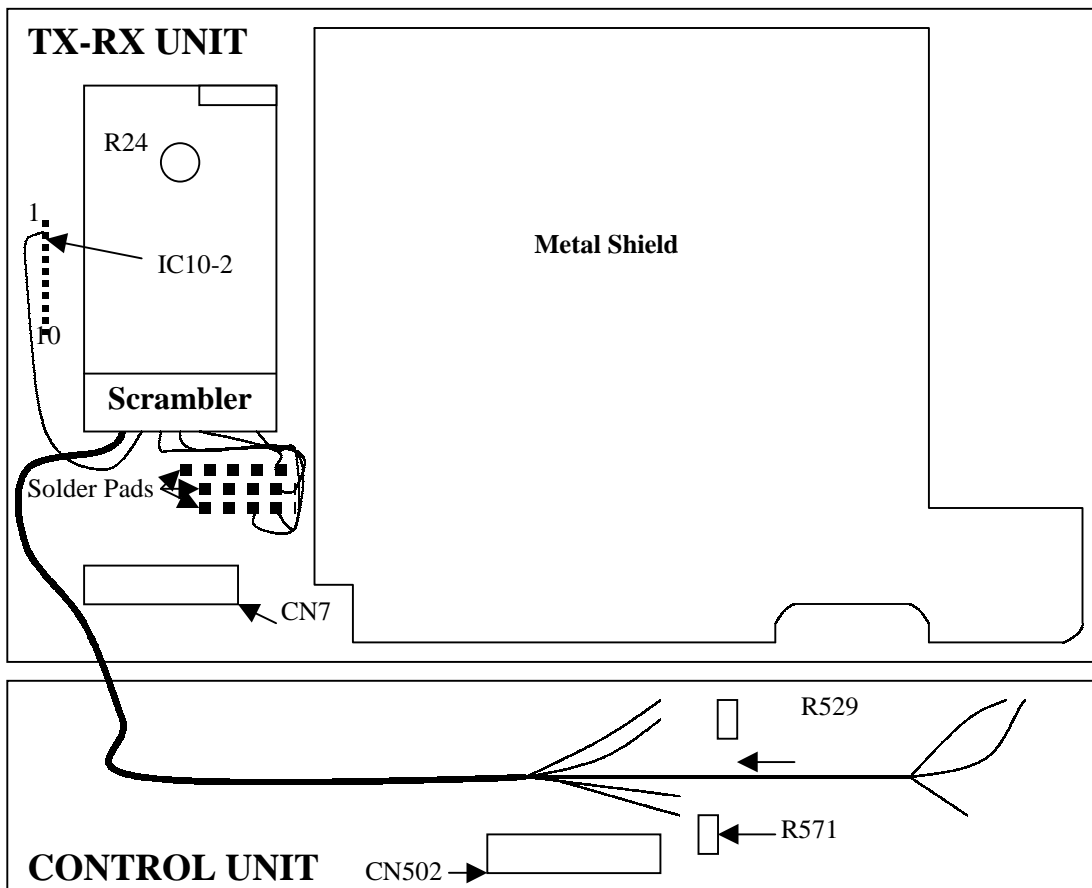
Install a 1.1K ohm resister into R28 and R35 customer select locations.

ST-25B Programming Parameters



Placement

Position the Scrambler in the TX-RX unit as shown below.



Wiring Connection Chart & NOTES for the ST-25B to Kenwood TK-780/880

INSTALLATION:

Remove the upper and lower halves of the transceiver case, then remove the faceplate and unscrew the control unit.

NOTES:

Radio modification:

1. Remove R529 and R571 on the control unit.

ST-20B or ST-25B gain select resistors:

2. Install a 33K ohm resistor into R4 and R21 customer select locations. Install a 1.1K ohm resistor into R28 and R35 customer select locations.
3. Add a .1µf capacitor in series with WHITE/GREEN. **Or** replace R44 on the encryption unit with a surface mount .1µf capacitor.

ST-25B only:

4. OPTIONAL, this connection should only be used when a long transmit delay is needed. Transmit alert tone is a courtesy beep to indicate go ahead and talk. Add a 1.2m ohm resistor in series with the WHITE/ORANGE lead to IC10-2 on the TX-RX unit.

- The chart below is a guide to assist in locating the solder point connections required for this installation.

ST-20/25B Interface Cable					
J1	ST-20/25B	ST-20/25B		TK780/880	
PIN #	COLOR	FUNCTION		DESIGNATION	LOCATION
1.	WHITE/BLUE	RECEIVE AUDIO	OUTPUT	RXAO	ON THE CONTROL UNIT
2.	VIOLET	CODE SELECT 1	INPUT	C1	ON THE TX-RX UNIT
3.	RED	POSITIVE (+) SUPPLY		SB	ON THE CONTROL UNIT
4.	WHITE/ORANGE	SPEAKER BEEP	OUTPUT	Optional for ST-25B ONLY (see notes # 4)	
5.	BLACK/ORANGE	CODE SELECT 2	INPUT	C2	ON THE TX-RX UNIT
6.	YELLOW	PTT IN	INPUT	PTT	ON THE CONTROL UNIT
7.	BROWN	CLEAR/CIPHERED	INPUT	OP	ON THE TX-RX UNIT
8.	BLACK/BROWN	AMP ENABLE (NOT USED)	OUTPUT	N/A	
9.	BLACK	NEGATIVE (-) SUPPLY		GND	ON THE CONTROL UNIT
10	BLACK/YELLOW	CODE SELECT 3	INPUT	C3	ON THE TX-RX UNIT (REQUIRED FOR THE ST-20B ONLY)
11.	BLUE	RECEIVE AUDIO	INPUT	RXAI	ON THE CONTROL UNIT
12.	GREEN	TRANSMIT AUDIO	INPUT	TXAI	ON THE CONTROL UNIT
13.	WHITE/GREEN	TRANSMIT AUDIO	OUTPUT	TXAO	ON THE CONTROL UNIT (see notes # 3)

Final Assembly

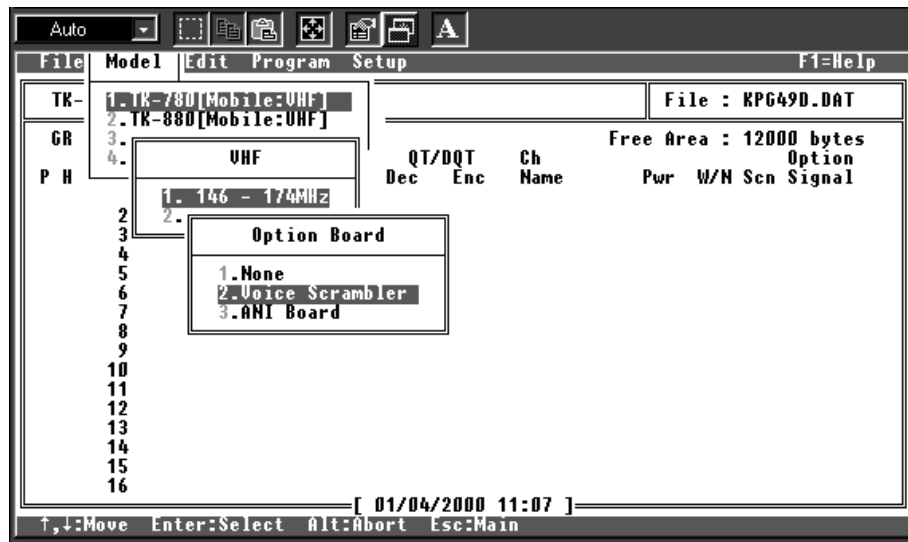
Use the supplied shrink sleeve to insulate the scrambler, then secure it with the supplied double-sided tape to the radios TX-RX UNIT as described previously under **Placement**.

- ST-25B only: Go to Radio Programming then return.
 - ST-25B only: Transmit in ciphered mode and adjust Sync to half system deviation.
- Reassemble radio.

Required Radio Programming for TK-780/880 Mobile Radio

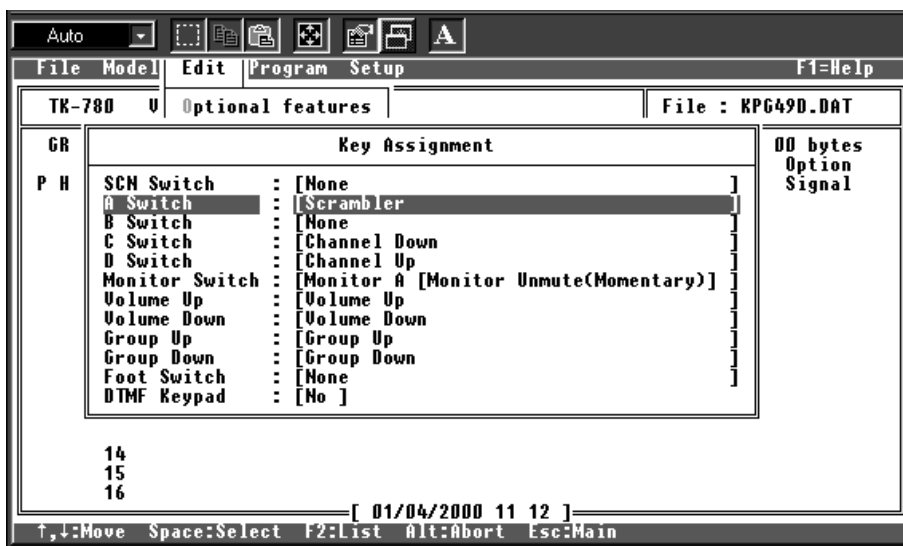
Scrambler Feature Enable:

To enable the Scramble feature on your radio, you must first set it up through the initial radio setup. To do this run the radio programming software, go to **Model**, set all your features. When you come to Option Board choose **Voice Scrambler**.



Scrambler Enable and Disable Key Assignment:

Go to **Edit**, then **Key Assignment**. Select a button to provide the scrambler enable and disable function and assign it to the **Scrambler** function.



Channel power up Code Select Assignment:

At the main menu press **F10** to edit channel. In the **Voice Scrambler** location you must assign each channel you wish to scramble with a power-up code select number.

